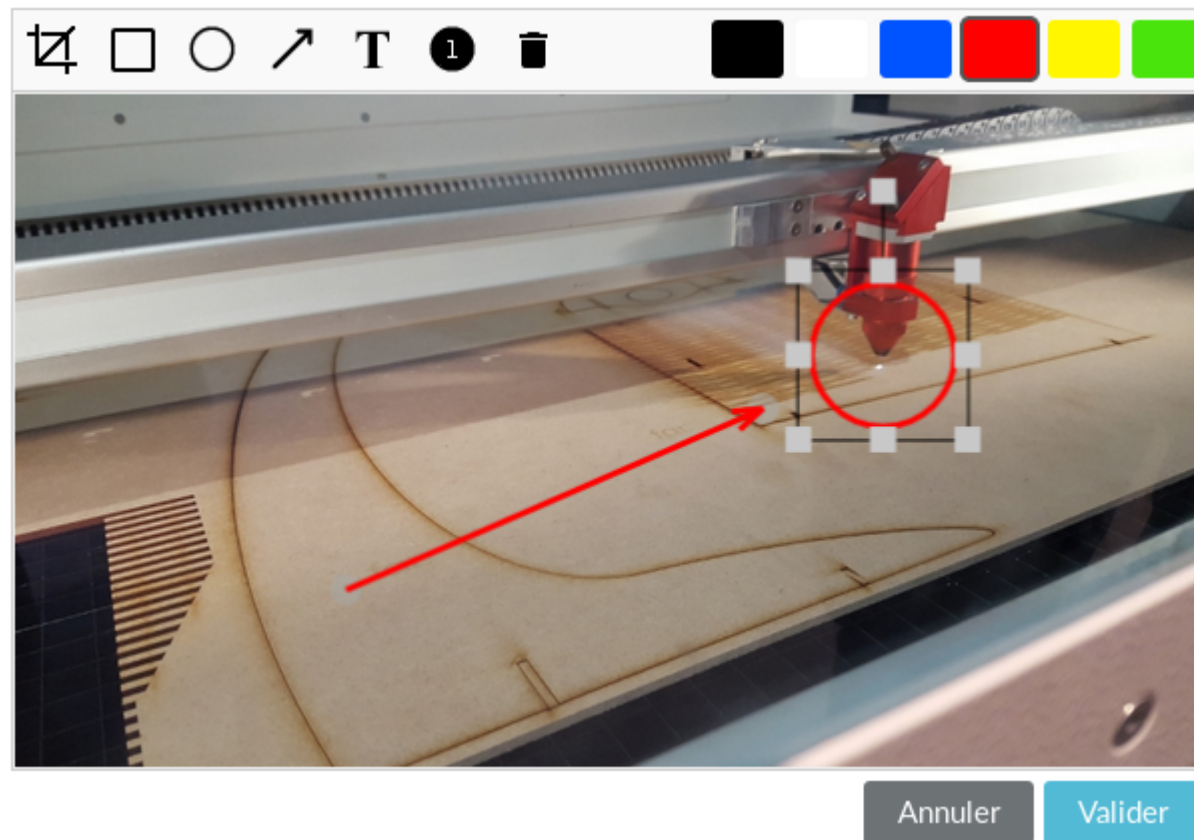




Integrate annotated images in Mediawiki and
Visual Editor.

Annotated Images



Annotated Images

- Use librairie Fabric.js
- Store image data in a json object
- Can save image in SVG

Annotated Images

Insertion of image in semantic data :

```
{{My Step template  
|Step_Picture=Image of building.png  
|Step_Picture_annotation={"objects":  
[{"type":"wfcircle","left":97.67,"top":50.67,"width":  
200,"height":200,"stroke":"red"},  
{"type":"wfcircle","left":135.6,"top":256.6,"width":  
200,"height":200,"stroke":"red",}], "height":"408", "w  
idth":"600"}  
}}
```

Annotated Images

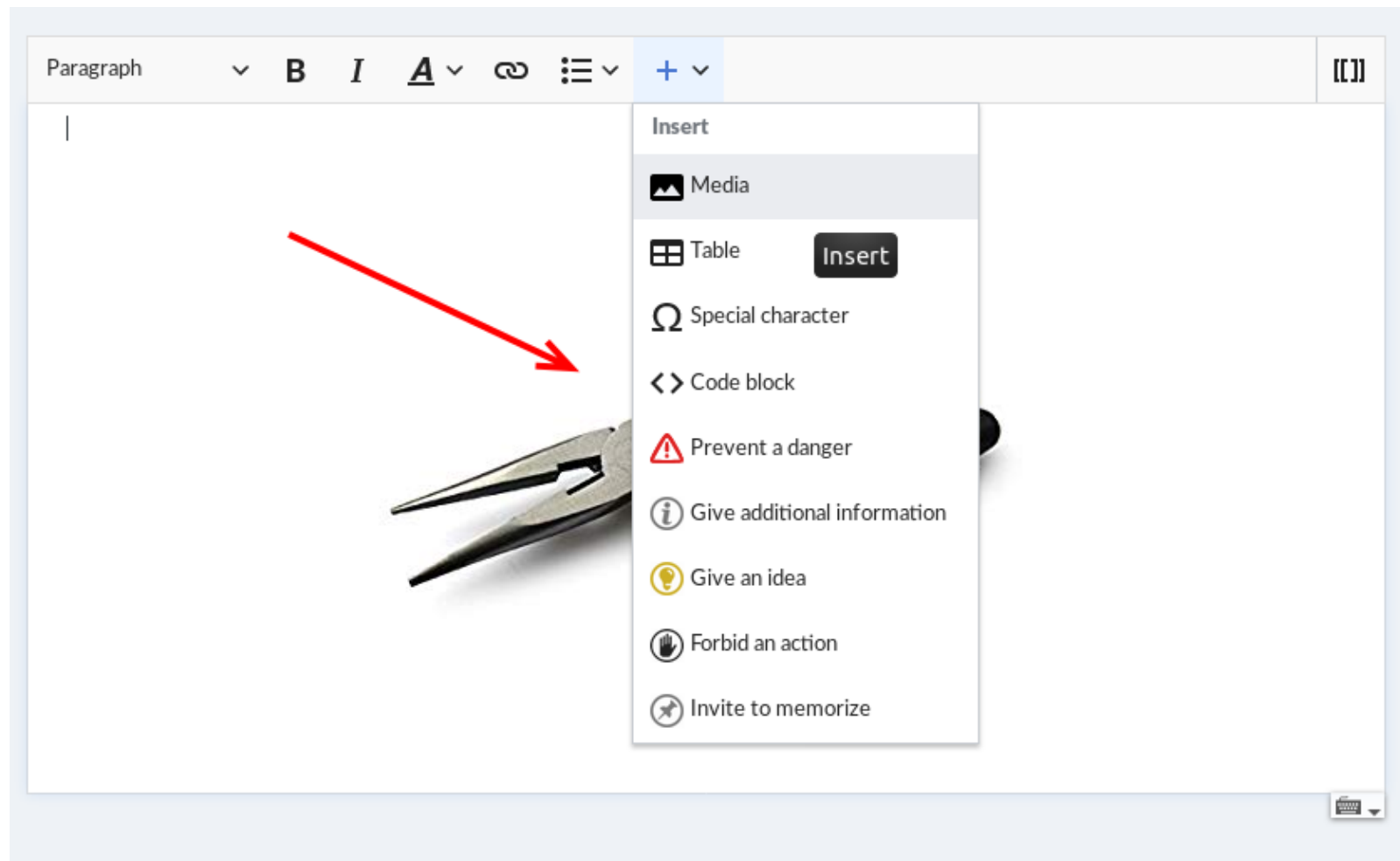
Insertion of image with a parsing function :

```
{ {#annotatedImageLight:Fichier:Image of  
building.png|  
hash=6357042a60bec6b295cfcea13b038b3f|  
jsondata={"objects":  
[{"type":"wfcircle","left":97.67,"top":50.67,"wi  
dth":200,"height":200,"stroke":"red"},  
{"type":"wfcircle","left":135.6,"top":256.6,"wid  
th":200,"height":200,"stroke":"red",}], "height":  
"408", "width":"600"} |caption=|size=600px} }
```

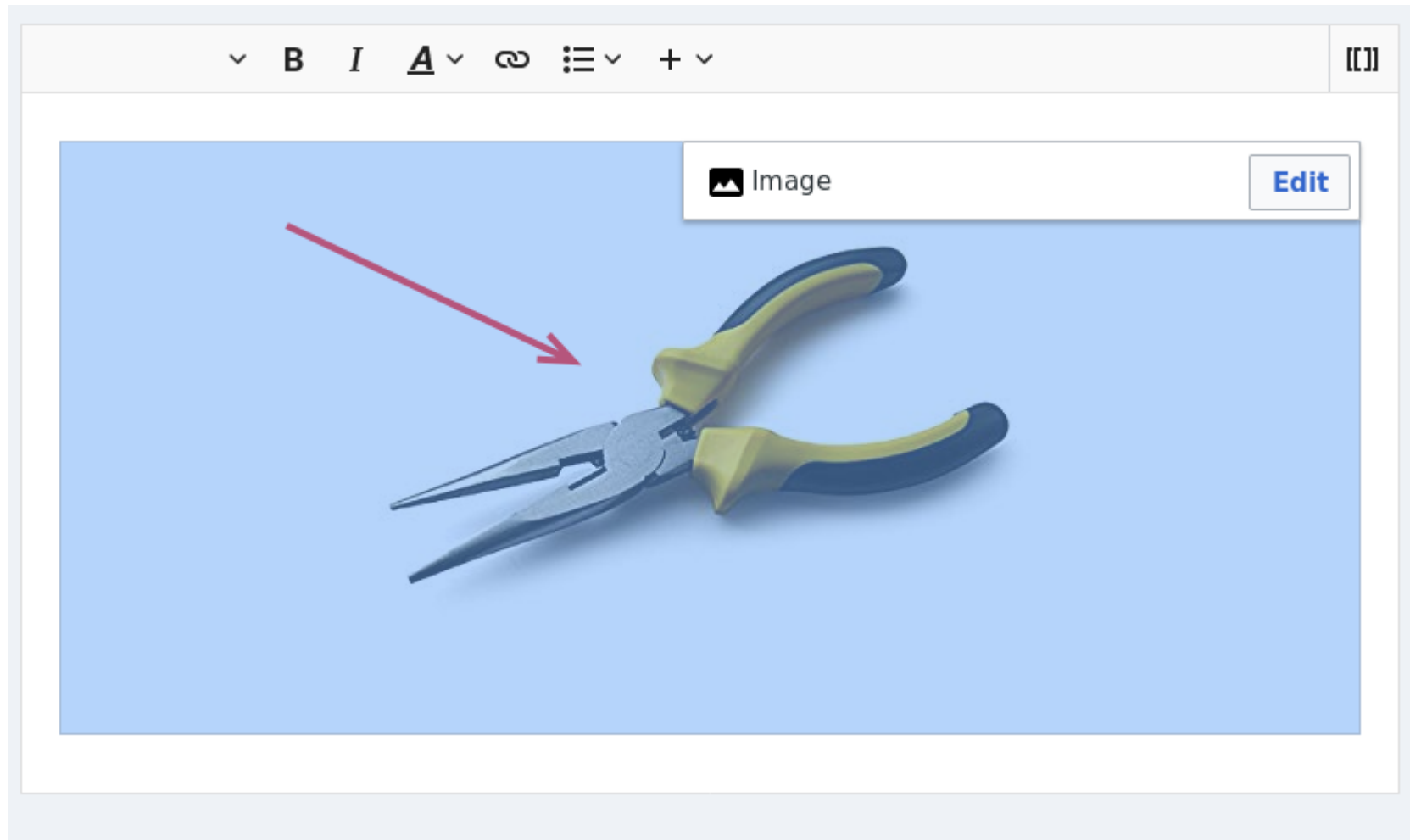
Annotated Images

- Integration in Visual Editor
- New Extension : VeTemplates
 - Allow insertion of custom templates in VE
 - Custom popup to edit the template properties

Annotated Images



Annotated Images



Annotated Images

The image shows a 'Media settings' dialog box with a light gray background. At the top left is a 'Cancel' button, and at the top right is an 'Apply changes' button. On the left side, there are two tabs: 'General settings' (unselected) and 'Advanced settings' (selected and highlighted in blue). The main area of the dialog is divided into sections. The 'Position' section has a checked checkbox for 'Wrap text around this item' and three buttons: 'Left', 'Center' (which is highlighted in blue), and 'Right'. The 'Image type' section has a dropdown menu currently showing 'Frameless'. The 'Image size' section has two buttons: 'Default' and 'Custom' (highlighted in blue). Below these are input fields for '600' and '350' separated by a multiplication sign, followed by 'px'. At the bottom of this section is a 'Make full size' button. At the very bottom of the dialog are two buttons: 'Change image' and 'Edit image'.

Cancel **Media settings** **Apply changes**

☐ General settings
☒ **Advanced settings**

Position

☒ Wrap text around this item

☐ Left ☒ **Center** ☐ Right

Image type

Frameless ▾

Image size

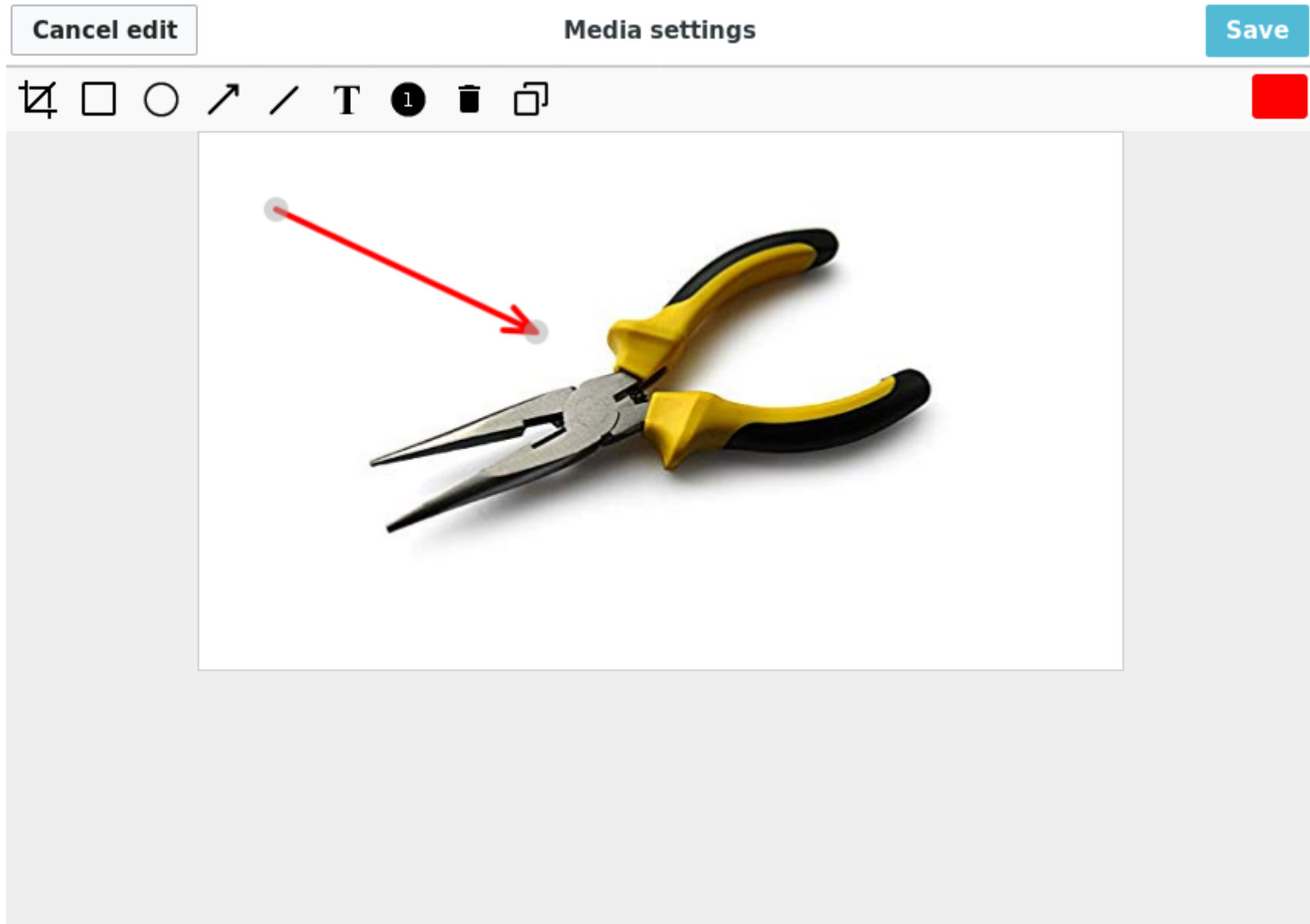
Default **Custom**

600 × 350 px

Make full size

Change image **Edit image**

Annotated Images



Annotated Images

i When cropping from a corner, holding down the **Shift** key disable the ratio constrain.



Cancel

Crop

The end